

NEW

PRESTIGE 1600

HYBRID PERFORMANCE LED



Ergoline

PRESTIGE

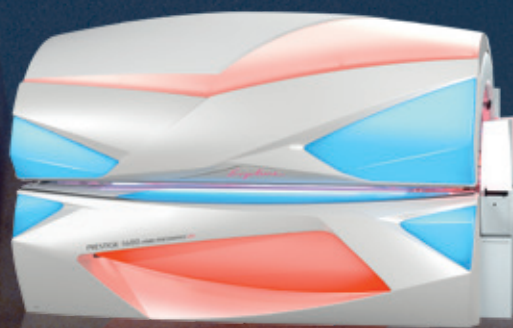
1600



TANNING WITH PRESTIGE

The Prestige range from Ergoline represents the latest UV technology combined with innovative comfort features and classic design. The new top model is setting new standards in tanning technology with its improved Hybrid Performance and Beauty Light LED. This unique combination of UV and red light delivers a particularly attractive and long-lasting tan with simultaneous skin care. Another totally new feature is Personal Sunstyle. Every customer can have their personally select their tan at the touch of a button. All the feel-good features including really easy-to-use Bluetooth Connect provide luxury at the highest level.

When will you be ready for more prestige in your tanning salon?





► DESIRED TAN AT THE TOUCH OF A BUTTON

Individual choice of tan from gentle to intense. Each user simply selects their customised tanning experience from three tanning programme options. Regardless of whether your customer is looking for a lightly tanned complexion or a directly visible, long-lasting tan: the Prestige 1600 with Personal Sunstyle is always the perfect sunbed. As always, the intensity of the facial tanners can be changed at any time during the session or turned off completely. This also makes UV-free use of the Beauty Light possible in the facial area. This will help you attract new target clientele!



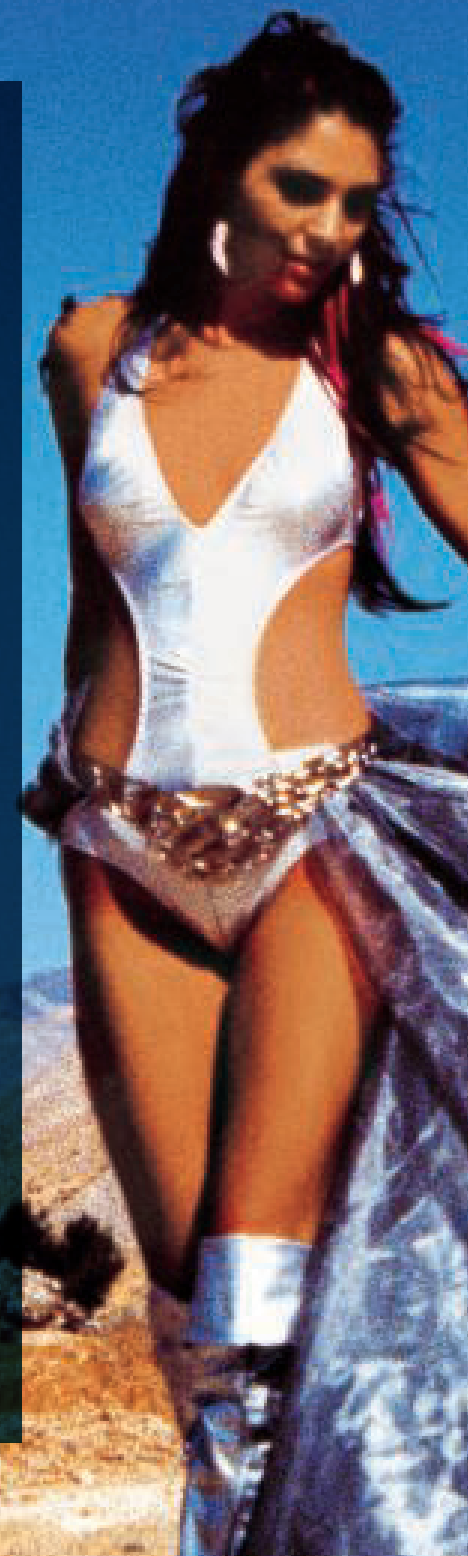
► SKIN CARE INCLUDED

The combination of UV light and Beauty Light enables a particularly attractive tan that takes care of the skin even when tanning. The face and décolleté are pampered by special Beauty Light LEDs for velvety smooth skin and a fresh complexion. The red light spectrum developed in cooperation with light biologists is finely tuned to the biological reaction spectra of the skin. The computerised geometry of the reflectors ensures an even illumination of the face and décolleté. The Beauty Light element of the smartsun PLUS lamps in the sunbed deliver a relaxing experience for the rest of the body.



► TOP TANNING PERFORMANCE

The Hybrid Performance technology provides perfect tanning without compromise. The smartsun PLUS lamps build up pigmentation and, in combination with the Trend UV lamps, an immediately visible and long-lasting tan is achieved on the body. Dynamic, electronic ballasts always ensure 100% performance. In the facial area, four Ultra Performance Plus facial tanners with new smartsun spaghetti lamps ensure 0.3 optimised tanning performance. The activating red light spectra improve blood circulation and oxygen supply in the skin which further enhances the tanning process.





► MUSIC WITH BLUETOOTH CONNECT

A totally new feature is Bluetooth Connect. This allows every user to transfer their favourite playlist from their own smartphone to the 3D sound system. It can be easily operated during the tanning session using the convenient Smart Control panel. The current track is shown on the large display and the user can move directly to the next song using the plus or minus key. Only available from Ergoline! Alternatively, mobiles and MP3 players can of course still be connected to the sunbed using the integrated audio cable.



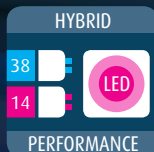
► ALL-ROUND FEELING OF WELLBEING

The standard comfort features with Aqua Fresh, Aroma, Climatronic and 3D sound deliver luxury at the highest level. All feel-good settings can be adjusted in the control centre before the tanning session begins and can be stored on the customer's card using NFC Connect. When the chip is held up to the NFC field on the next visit the sunbed is automatically adjusted to all of the customer's personal preferences. Lie down, eyes closed, goggles on and relax – every user automatically gets their personal favourite sunbed session experience.



► SERVICE MADE EASY

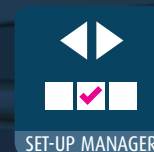
Easy-care materials and the new Service Lights on the base make cleaning easier than ever for salon staff. The easy-to-use Professional Set-Up Manager in the control centre provides you with a comprehensive and self-explanatory device management system. Selecting the LED Light Show or adjusting the air-conditioning or ventilation – all the settings can be carried out very easily. And with NFC Connect you can transfer the entire configuration to other sunbeds in a matter of seconds.



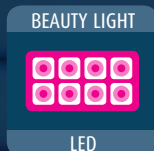
The improved Hybrid Performance technology provides optimum tanning results with additional skincare using smartsun PLUS lamps and Beauty Light LEDs.



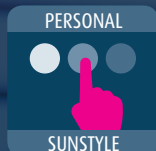
Thanks to the LED interior light new features are emphasised in the interior too. The brightly lit tanning tunnel looks particularly clean and inviting your customers to have a tanning session.



The Professional Set-up Manager provides very efficient device management. All the parameters can be set really easily and even transferred to other sunbeds using NFC.



Newly-developed high performance LEDs intensify the tan and care for the skin with special red light. Computerised reflectors ensure optimised distribution of the light spectra.



Personal Sunstyle provides the desired tan at the touch of a button. From gentle to intense - users can always choose their customised tanning experience.



The Voice Guide explains every user function for the sunbed with a friendly voice to guide the user with confidence.



The 0.3 optimised Ultra Performance Plus technology with glass reflectors including UVB spaghetti lamps and filter discs with special coating represent maximum efficiency in the facial area.



All feel-good settings can be adjusted using the control centre in a matter of a few seconds before the tanning session begins. For a particularly relaxing tanning session.



Every Ergoline sunbed is designed so that parts that require servicing can be reached in a few movements. The practical Service Light makes cleaning and maintenance even easier for salon staff.



Additional tanning for the shoulders! High-pressure shoulder tanners featuring innovative Ultra Performance technology supply a perfect tan in the shoulder area.



All of the comfort settings can be stored on the customer's card using NFC Connect - on their next visit the sunbed is set immediately to the customer's personal preferences.



Using Bluetooth Connect, the customer can wirelessly transfer their favourite music from their own smartphone to the sunbed. It is really easy to use during the tanning session using the convenient Smart Control panel.



Top-quality high performance LEDs ensure an impressive brightness with over 200 colour and light effects. Up to 80% energy saving and a life of over 30,000 hours.



The easy-care glass Smart Control panel with its large display makes it quicker and easier to operate the sunbed than ever before.



Pleasant refreshment while tanning is ensured by the Aqua Fresh function that sprays essences into the tanning room in a fine mist and can be adjusted separately for the body and face.



AROMA

The Aroma programme treats the user with a subtle fragrance so your customers can enjoy their tanning session using all their senses.



MULTI RELAX

The ergonomically shaped base with integrated headrest, comfortable arm moulds and variable foot supports ensure a seamless tan and ultimate comfort whilst tanning.



ECO TECH

Dynamic ballasts, efficient LED lights and intelligent power-saving settings ensure high energy efficiency. Eco Tech enables you to carry out further energy-saving settings.



CLIMATRONIC

Thanks to Climatronic, the user can select their desired temperature which is then kept constant throughout the tanning session by an automatic temperature control system.



CLIMATRONIC PLUS

With the optional Climatronic PLUS, the feel-good temperature is reached even faster due to an enclosed tanning tunnel and can also be maintained at times when the indoor climate is extreme.



3D SOUND

The 3D Sound System provides a sensational sound experience. The system consists of two loudspeakers, a subwoofer, SD card slot and MP3 dock.

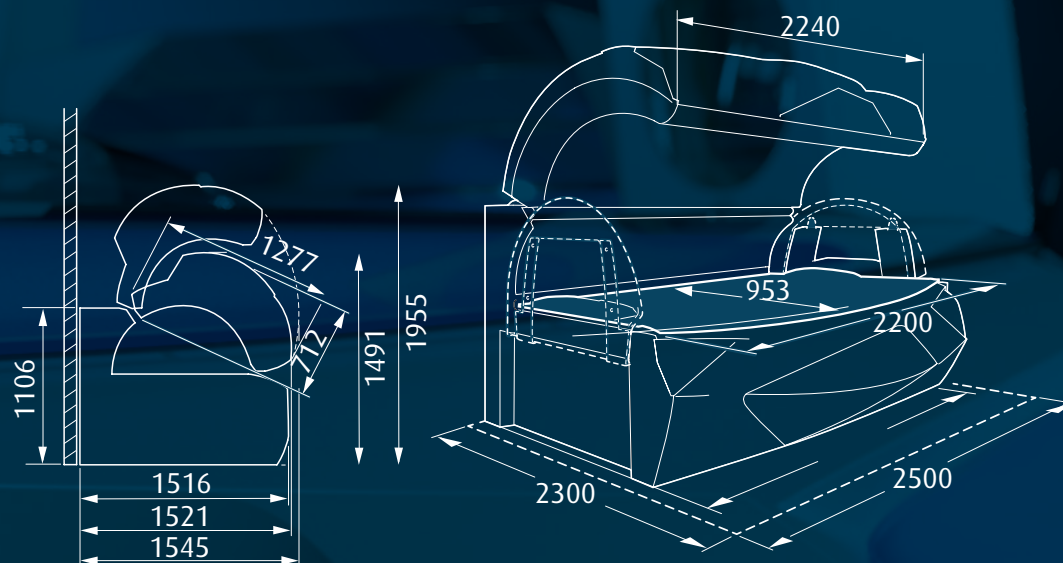


MP3 AUX

With this function your customer can connect their MP3 player or smart-phone using an integrated audio cable and enjoy their own music during the tanning session

TECHNICAL VALUES

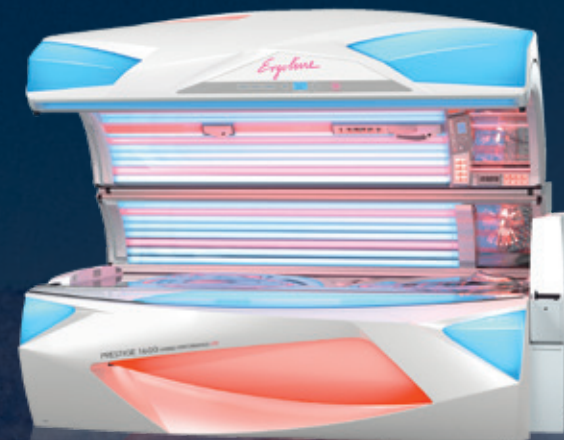
- ▶ Automatic thermostat-controlled hot-air extraction (M)
- ▶ Automatic temperature-adjusted centralised ventilation
- ▶ Dimensions closed (L x W x H in cm): 239 x 153 x 150
- ▶ Dimensions open (H in cm): 196
- ▶ Access height (in cm): 58
- ▶ Access opening height (in cm): 72
- ▶ Minimum cabin dimensions (L x W in cm):
- ▶ Total output with mains connection 400/415 V 3N: 17.800 Watt
- ▶ Fuse (slow): 3x 35 A
- ▶ Weight: 630 kg



Finish and design, price and delivery possibility are subject to change.
The maximum UV output is adapted to the national regulations.

PRESTIGE 1600

silverpearl



► HYBRID PERFORMANCE LED

Trend UV lamps:	38 x 200 watts max.
smartsun PLUS lamps:	14 x 200 watts max.
Facial tanner:	4 x 520 watts max.
smartsun Spaghettis:	3 x 8 watts
Shoulder tanner:	2 x 240 watts
LED Beauty Light Technology	

The maximum UV output is adapted to the national regulations.

► Prestige 1600 incl. Featured as standard
Art.-Nr. 500001281

► Prestige 1600 incl. Featured as standard and Climatronic PLUS
Art.-Nr. 500001282



Ergoline

ERGOLINE

RECHARGE

INTERVIEW



HYPERSTUDIO
SETUP
MANAGER



We reserve the right to alter technical specifications, design and availability.

JK-INTERNATIONAL GMBH | Koehlershohner Strasse 60 | 53578 Windhagen | Germany
+49 2224/818-0 | info@ergoline.de | www.en.ergoline.de



facebook.de/ErgolineWorld



instagram.de/ErgolineWorld



youtube.de/ErgolineWorld



Ergoline